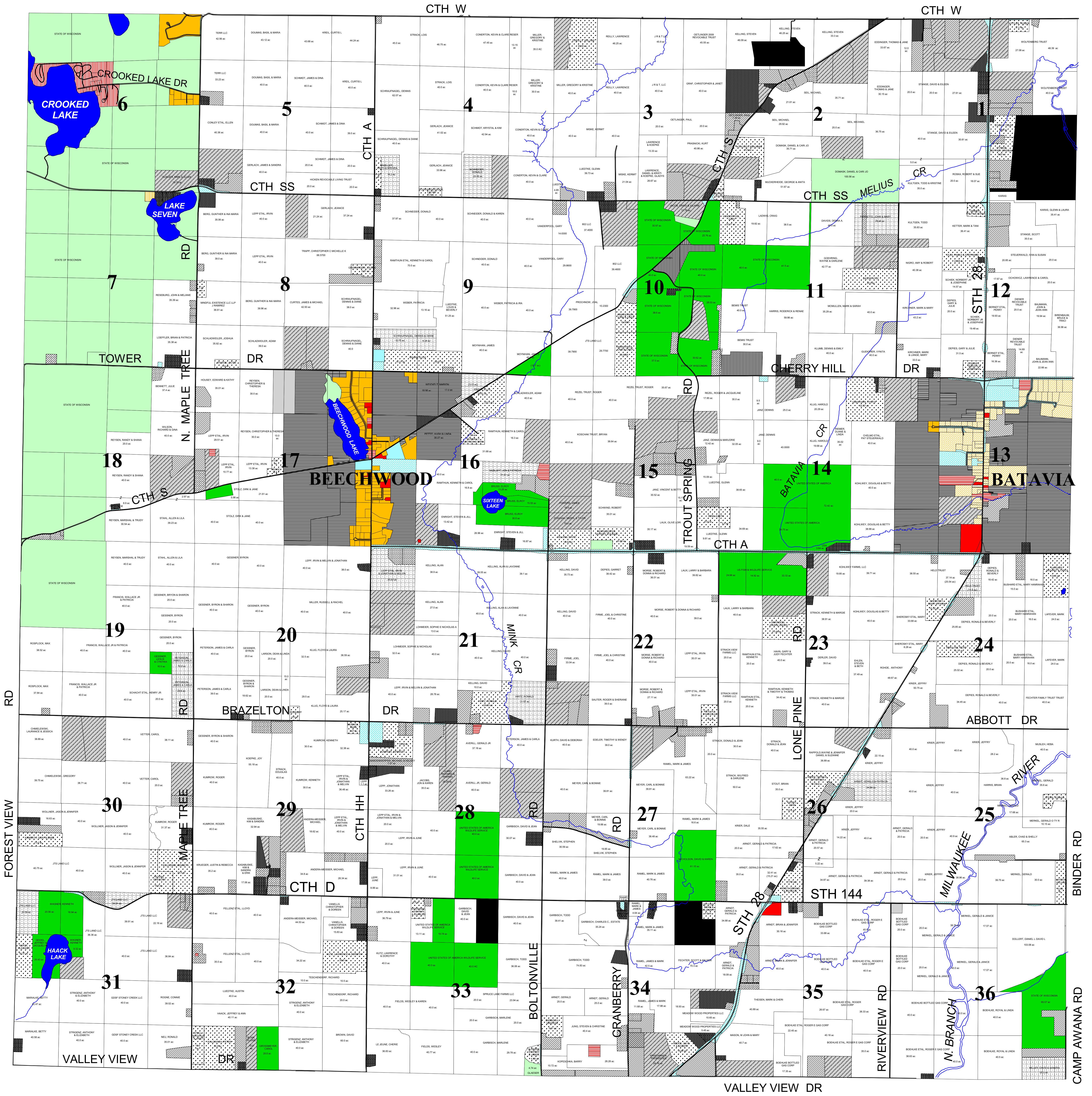


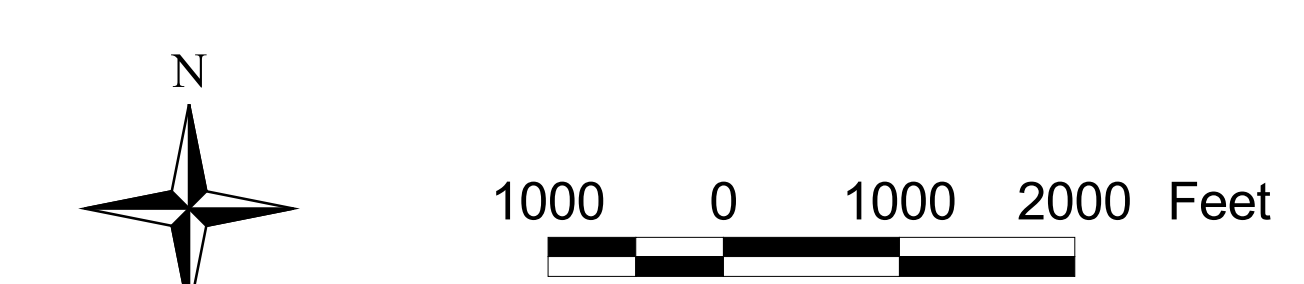
ZONING - TOWN OF SCOTT



Zoning Districts
 * Within Farmland Preservation

	A-1*		B-1		P-1
	A-1-S*		B-3		P-2
	A-2		B-4		R-1
	A-3		C-1		R-2
	A-4		C-2		R-3
	A-5		M-1		R-4
	A-6		M-2		
	A-PR*		M-3		

- Parcel lines
- Roads
- Rivers
- Lakes



Adopted by Town Board on December 27, 2016
 Map Prepared by Sheboygan County UW-Extension, 9/13/16
 Zoning data from Town of Scott, 8/30/16
 Parcel, hydrology, and transportation data from Sheboygan County, 2016
 This map is not a survey of the actual boundary of any property this map depicts.